

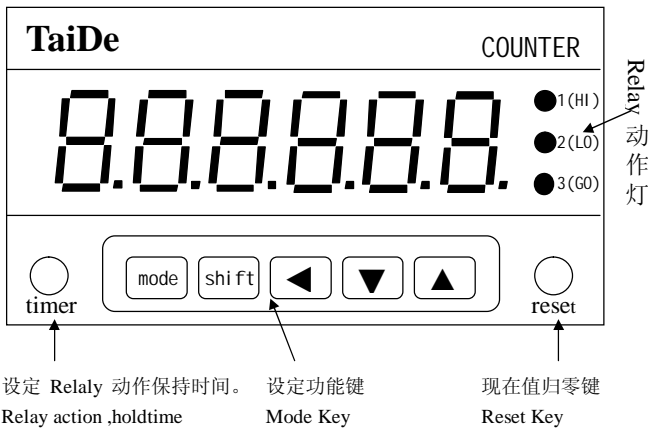
6 位数按键设定式计数器

6 DIGIT KEYBOARD PRESET COUNTER

产品规格 Specification

型号规格 Item No	TC-62KD(2NC)
显示范围 Display Range	-99999 ~ 999999
设定范围 Setting Range	1 ~ 999999
显示尺寸 Display Height	Count LED 0.56" (RED)
计数输入 Input Signal Mode	有接点输入 Contact Input:25HZ 无接点输入 NO Contact Input:1kHz
输出方式 Output System	Relay Output (AC 250V/3A)
输出时间 Output Hold Time	0.1 ~ 9.9 Seconds (Variable)
复归方式 Reset System	External, Manual, AutoReset
输入信号 Input Level	NPN, Open Collector
停电记忆 Power Failure Memory	EEPROM Memory Keep Ten Years
信号电源 DC Out For Sensor	12V DC ±5 % Max Electric Current Capacity 100Ma
电源电压 Power Supply	AC 110V/220V ±15 % 50Hz/60Hz
消耗功率 Power Consumption	5.5 VA
耐温湿度 Operating Temperature Humidity	-10°C ~ +50°C 35 % ~ 85 % RH
外形尺寸 External Dimensions	96mm × 48mm × 123mm (盘面开孔 Mounting Flush Dimension:92mm × 45mm)

面板说明 Panel Explanation



Mode 键 选择设定功能类别

- (1)Hi: 设定上限目标值, 范围 1~999999.
- (2)Lo: 设定下限目标值, 范围 1~999999.
- (3) %CL: 倍率设定, 范围 0.0001 ~ 99.9999.
- (4) P0nt: 小数点位置设定.

Used to change display mode or operation mode

- (1)Hi: Set High preset value, range 1~999999.
- (2)Lo: Set Low preset value, range 1~999999.
- (3) %CL: Percentage setup, range 0.0001~99.9999.
- (4) P0nt: Decimal point setup.

Shift 键 Shift Key

决定设定类别或结束设定.

Used to change display mode or operation mode, and when the function setups over, please press this key

◀ 键: 设定位数左移.

Move left to select the setting option.

▲ 键: 位数值加 1, 按住不放则连续递增.

The preset value add one, pressing the pushbutton, the preset value go on adding to reaches the desired value.

▼ 键: 位数值减 1, 按住不放则连续递减.

The preset value dec one, pressing the pushbutton, the preset value go on decing to reaches the desired value.

timer 键 timer Key

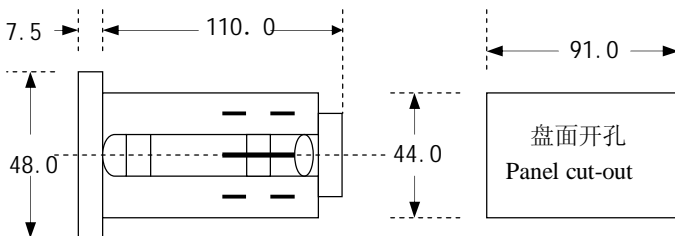
设定 Relay 动作保持时间 范围 0.1 ~ 9.9sec
Set Relay action, holdtime, range 0.1~9.9sec

reset 键 reset Key

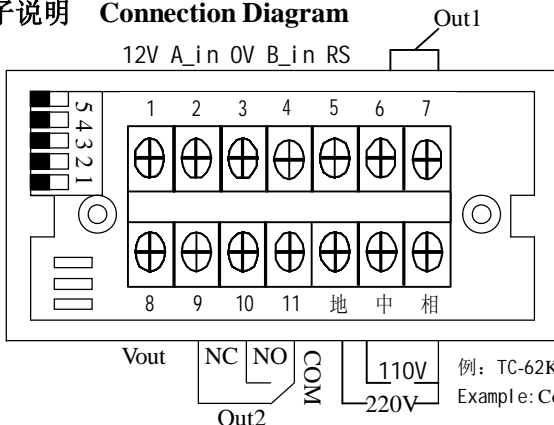
在按下此键时, 现在值清除为零.

Press the key to clear the current displayed value.

外形尺寸图 Dimension Diagram (Unit: mm)



端子说明 Connection Diagram



例: TC-62KD(2NC) 端子说明.
Example: Connection Diagram of TC-62KD(2NC).

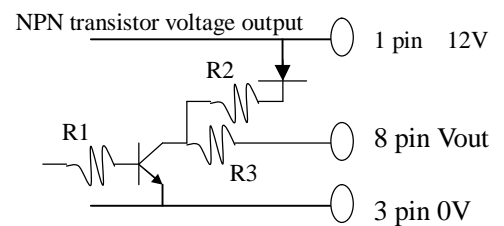
定流程 Preset Step

设定类别 Setup type	步骤 step
Hi	mode → shift → ◀ → ▲ → ▼ Hi → 654321 → 设定上限值 Start to set Hi value.
Lo	mode → mode → shift → 设定下限值 Hi → Lo → 654321 → Start to set Lo value.
SCL	mode → --- → mode → shift → 设定倍率 Hi → SCL → 01.0000 → Start to set percentage
Port	mode → --- → mode → 用 ◀ 决定小数点的位置 Hi → Port → Port Press ◀ to select the decimal point

信号输入方式 Signal Input Type

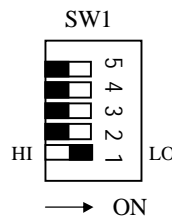
端子 A_in (2 脚), B_in (4 脚), RS (5 脚) 输入方式皆为 NPN 输入 (无电压入力)
The signal input way of the terminal A_in (2 pin), B_in (4 pin), and RS (5 pin) all are "NPN" input.

Vout : NPN 电压出力, 可直接驱动 SSR。



SW1-1: 输入频率开关 SW1-1 Switch

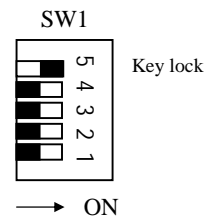
- SW1-1 为 OFF 时, 信号无滤波电容, 频率可达 1KHz。
When SW1-1 is "OFF", Removes damping capacitor and allows operation up to 1KHz.
- SW1-1 为 ON 时, 信号有滤波电容, 频率可达 25Hz。
When SW1-1 is "ON", Connects small damping capacitor and limits counter frequency to 25Hz.



SW1-5: 开关 SW1-5: Switch

Sw1 -5 ON 时, 无法选择设定功能, Sw1-5 OFF 时方可选择设定功能, 在设定功能完成后, 尽量保持 Sw1-5 在 ON 的位置, 以免人为操作失误。

When Sw1-5 is ON, the function can't be set. Just as Sw1-5 OFF, then the function can be selected. When the function mode is selected, trying to hold Sw1-5 in the "ON" condition to keep from man-made mistakes.



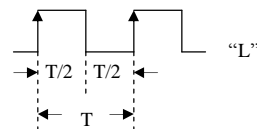
SW1-3, SW1-4: 开关无用 SW1-3, SW1-4: Switch no use

SW1-2: 开关 SW1-2: Switch

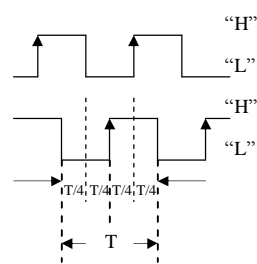
计数方式 (Counting Method)

- Sw1-2 OFF: 单相加算, 单相减算 (单相入力)
Sw1-2 OFF: single addition, single dection (single phase)
- Sw1-2 ON: 加减算 (90° 相位差输入)
Sw1-2 ON: addition and subtraction (Quadrature input)
此计数模式常配合译码器 (encoder) 使用, 或配合两个 sensor, 但要注意相位差尽量为 90°。
This quadrature counting mode can be implemented by the rotary encoder or two sets of photoelectric sensors.
- 注意在改变计数模式后, 必须切断电源再重新通电开机。
You must turn on the counter again when change the mode of the counter

A_in: 2 pin
加算输入 addition
B_in: 4 pin
减算输入 dection

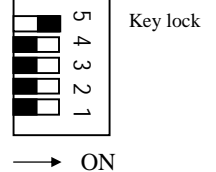


A_in: 2 pin
B_in: 4 pin



→ ON

→ ON



90° quadrature input