

6 位数按键设定式计数器

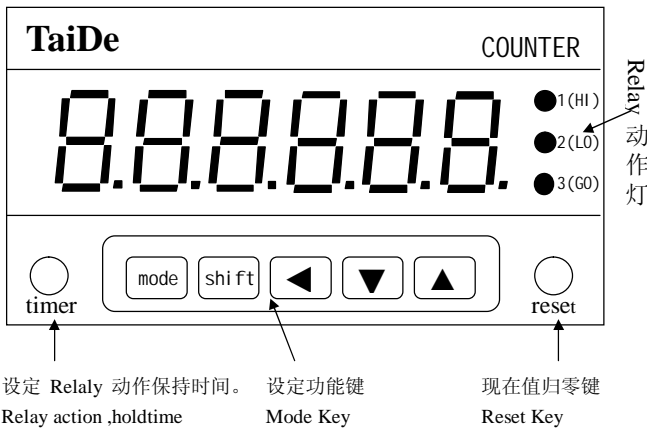
6 DIGIT KEYBOARD PRESET COUNTER

Hi-Lo-Go 追踪器

产品规格 Specification

| | |
|-------------------------------------|---|
| 型号规格 Item No | TC-63KC |
| 显示范围 Display Range | -99999 ~ 999999 |
| 设定范围 Setting Range | 1 ~ 999999 |
| 显示尺寸 Display Height | Count LED 0.56" (RED) |
| 计数输入 Input Signal Mode | 有接点输入 Contact Input:25HZ 无接点输入 NO Contact Input:1kHz |
| 输出方式 Output System | Relay Output (AC 250V/3A) |
| 输出时间 Output Hold Time | 0.1 ~ 9.9 Seconds (Variable) |
| 复归方式 Reset System | External, Manual, AutoReset |
| 输入信号 Input Level | NPN, Open Collector |
| 停电记忆 Power Failure Memory | EEPROM Memory Keep Ten Years |
| 信号电源 DC Out For Sensor | 12V DC ±5 % Max Electric Current Capacity 100Ma |
| 电源电压 Power Supply | AC 110V/220V ±15 % 50Hz/60Hz |
| 消耗功率 Power Consumption | 5.5 VA |
| 耐温湿度 Operating Temperature Humidity | -10°C ~ +50°C 35 % ~ 85 % RH |
| 外形尺寸 External Dimensions | 96mm × 48mm × 123mm (盘面开孔 Mounting Flush Dimension:92mm × 45mm) |

面板说明 Panel Explanation



Mode 键 选择设定功能类别

- (1) $\overline{PC-2}$: 设定目标值, 范围 1~999999.
- (2) $\overline{5CL}$: 倍率设定, 范围 0.0001 ~ 99.9999.
- (3) \overline{PDnt} : 小数点位置设定.

Used to change display mode or operation mode

- (1) $\overline{PC-2}$: Set preset value, range 1~999999.
- (2) $\overline{5CL}$: Percentage setup, range 0.0001~99.9999.
- (3) \overline{PDnt} : Decimal point setup.

Shift 键 Shift Key

决定设定类别或结束设定。

Used to change display mode or operation mode, and when the function setups over, please press this key

◀ 键: 设定位数左移。

Move left to select the setting option.

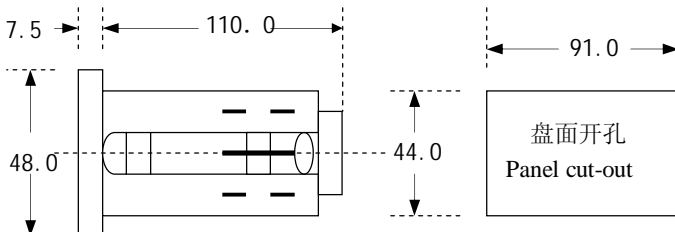
▲ 键: 位数值加 1, 按住不放则连续递增。

The preset value add one, pressing the pushbutton, the preset value go on adding to reaches the desired value.

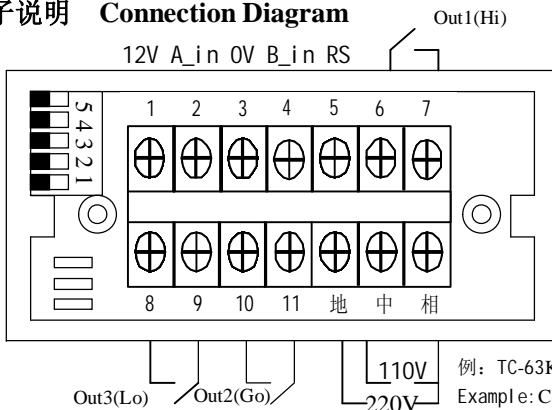
▼ 键: 位数值减 1, 按住不放则连续递减。

The preset value dec one, pressing the pushbutton, the preset value go on decing to reaches the desired value.

外形尺寸图 Dimension Diagram (Unit: mm)



端子说明 Connection Diagram



例: TC-63Kc 端子说明。

Example: Connection Diagram of TC-63Kc.

timer 键 timer Key

当计数值由设定值向减小或增大转变时, 设定 GO 输出 Relay 动作保持时间 范围 0.1 ~ 9.9sec
Set GO Relay action, holdtime, range 0.1 ~ 9.9sec

reset 键 reset Key

在按下此键时, 现在值清除为零, GO 动作输出。
Press the key to clear the current displayed value, GO Relay action.

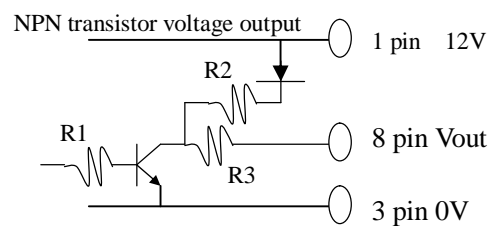
定流程 Preset Step

| 设定类别 Setup type | 步骤 step |
|--------------------|--|
| PS-2 | mode PS-2 → shift 654321 → 设定目标值 Start to set the two value. |
| SCL | mode PS-2 → mode SCL → shift 01.0000 设定倍率 Start to set percentage |
| Port | mode PS-2 → mode Port 用 ◀ 决定小数点的位置 Press ▶ to select the decimal point |

信号输入方式 Signal Input Type

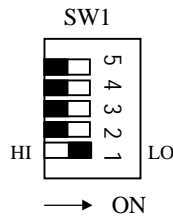
端子 A_in (2 脚), B_in(4 脚), RS (5 脚)输入方式皆为 NPN 输入 (无电压入力)
The signal input way of the terminal A_in (2 pin), B_in (4 pin), and RS (5 pin) all are "NPN" input.

Vout : NPN 电压出力, 可直接驱动 SSR。



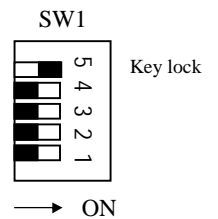
SW1-1: 输入频率开关 SW1-1 Switch

- SW1-1 为 OFF 时, 信号无滤波电容, 频率可达 1KHz。
When SW1-1 is "OFF", Removes damping capacitor and allows operation up to 1KHz.
- SW1-1 为 ON 时, 信号有滤波电容, 频率可达 25Hz。
When SW1-1 is "ON", Connects small damping capacitor and limits counter frequency to 25Hz.



SW1-5: 开关 SW1-5: Switch

Sw1-5 ON 时, 无法选择设定功能, Sw1-5 OFF 时方可选择设定功能, 在设定功能完成后, 尽量保持 Sw1-5 在 ON 的位置, 以免人为操作失误。
When Sw1-5 is ON, the function can't be set. Just as Sw1-5 OFF, then the function can be selected. When the function mode is selected, trying to hold Sw1-5 in the "ON" condition to keep from man-made mistakes.



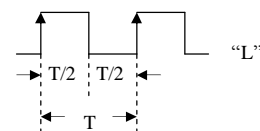
SW1-3, SW1-4: 开关 SW1-3, SW1-4: Switch : 在此表中无使用功能。

SW1-2: 开关 SW1-2: Switch

计数方式 (Counting Method)

- Sw1-2 OFF: 单相加算, 单相减算 (单相入力)
Sw1-2 OFF: single addition, single dection (single phase)

A_in: 2 pin 加算输入 addition
B_in: 4 pin 减算输入 dection

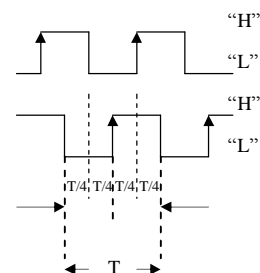


ON

- Sw1-2 ON: 加减算 (90° 相位差输入)

Sw1-2 ON: addition and subtraction (Quadrature input)
此计数模式常配合译码器 (encoder) 使用, 或配合两个 sensor, 但要注意相位差尽量为 90°。
This quadrature counting mode can be implemented by the rotary encoder or two sets of photoelectric sensors.

A_in: 2 pin
B_in: 4 pin



90° quadrature input

ON

- 注意在改变计数模式后, 必须切断电源再重新通电开机。
You must turn on the counter again when change the mode of the counter

使用说明:

- 当计数值 < 设定值时, Lo Relay 输出。
- 当计数值 = 设定值时, Go Relay 输出。
注: 当计数值由设定值向减小或增大转变时, 设定 GO 输出 Relay 动作保持时间由面板上的 Timer 键设定。
- 当计数值 > 设定值时, Hi Relay 输出。